

## TIRED OF STEPPING, SWIMMING & PLAYING IN DOG POOP?

**There's a simple solution!** Bring a bag and trash the poop! Pet waste left on the ground is more than just a hassle when you step in it. Leaving it on the ground means your kids can accidentally play in it. And when it rains, that poop goes down storm drains into nearby rivers and streams where you and your kids might accidentally swim in it! Now THAT'S gross!

### Pet waste left on the ground is:

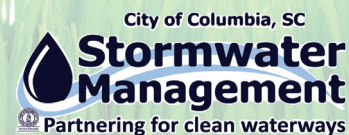
- Bad for your shoes!
- Bad for our kids!
- Bad for our rivers and streams!

I poop.  
You bag it  
and trash it.  
Any  
questions?

- ✓ Bring a plastic bag every time you walk your pet.
- ✓ If he poops, pick it up and trash it!



[www.trashthepoop.com](http://www.trashthepoop.com)



[www.trashthepoop.com](http://www.trashthepoop.com)

# WHAT IS TRASH THE POOP?



**Trash the Poop** is a program that encourages pet owners to pick up their pet's waste and discard it in the trash. The program provides community groups and organizations free pet waste stations in exchange for performing specific activities that encourage picking up pet waste.

The City of Columbia, Richland County, and Lexington County are offering free pet waste stations to neighborhoods throughout the area. For more information on the program, or to sign up for a free station in your neighborhood, visit our website:

[www.trashthepoop.com](http://www.trashthepoop.com)

## What's the harm in leaving my pet's waste on the ground?

When it rains, anything on the ground is washed into our local waterways—and that includes pet waste. Pet waste increases the amount of nutrients in waterways. That may sound like a good thing, but extra nutrients means extra plant growth, and when those plants die it causes oxygen to be removed from the water. No oxygen means no fish!



## How does leaving pet waste on the ground affect humans?

Pet waste has **three times** more pathogens (bacteria, parasites, and viruses) in it than human waste. These pathogens can cause diseases in humans and animals. A few of these pathogens and their impacts on humans are listed below.

- **Salmonellosis** - the most common bacterial infection transmitted to humans by other animals. Symptoms include fever, muscle aches, headache, vomiting, and diarrhea
- **Campylobacteriosis** - causes diarrhea
- **Cryptosporidium** - a parasite carried by dogs, cats, and calves
- **Toxocariosis** - roundworms transmitted from dogs to humans often without noticeable symptoms, but may cause vision loss, a rash, fever or cough

## How do we know leaving pet waste on the ground is a problem?

Water quality monitoring has found high levels of E. coli in several local creeks. E. coli is an indication that the water is contaminated with fecal material.



## Is it OK if I leave my pet's waste on the grass?

No. Pet waste breaks down very slowly. Even if it is in grass, there is still an opportunity for some of it to wash away when it rains; plus no one wants to step in it or have kids playing in or around pet waste.

## I'm just one person. What difference does it make if I don't pick up my pet's waste?

The average dog defecates about 3/4 pounds of feces every day. If no one picked up their pet's waste, imagine how much would pile up in a month. Now imagine all of that washing into our rivers! But you can help! Pick up your pet's waste and dispose of it in the trash.



## Is it a crime to not pick up my pet's waste?

Yes! There are laws on the books in the City of Columbia as well as Richland and Lexington Counties that require all waste, including fecal pet waste, be disposed of properly and in a manner that does not introduce pollution into storm drains or generally pollute the environment. If caught, you could be fined. For information about the ordinances in your area, visit our website: [www.trashthepoop.com](http://www.trashthepoop.com)